

LED Characteristics

GR-8/leds GR-9/leds

MANUFACTURER	Olympia Electronics S.A.
MODEL NUMBER	2201159
VOLTAGE RANGE	2.9-3.6V DC
NOMINAL POWER	780mW
CONNECTIONS	Non reversible connection between main pcb and led module
TEMPERATURE (tc)	45 °C max. across the board

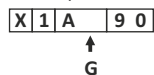
Pictogram Installation



The luminaire can be used as a safety sign. Place the appropriate pictogram to the luminaire. In the package are included 3 pictograms: (807008002 Set of Pictograms: Arrow Right, Arrow Left, Arrow Down).

Various directions and symbols can be provided upon request.

Note!! The installer should fill in, on the specification label, the letter **G** if the luminaire is used as a safety sign.



NOTE: LED= Light Emitting Diode

LABELING EXPLANATION:

- X: Self contained
- 1: Maintained operation (*)
- A: Including test device
- G: Internally illuminated
- 90: 90 minutes duration
- 180: 180 minutes duration

(*) **Maintained operation:** The luminaire lights its illumination source, when it is powered by the mains power supply or not.

Non Maintained operation: The luminaire lights its illumination source, only in power supply's failure.

Battery Replacement

It can be done only by a competent person and after the mains interruption.

1. Dismantle the device (step 1 of the installation instructions).
2. Disconnect the connector and remove the old battery.
3. Connect the new battery with the same type (step 6 of the installation instructions) and place it in the position of the old one.
4. Follow step 7 of the installation procedure and power on the device.

Technical Characteristics

GR-8/leds GR-9/leds

OPERATION VOLTAGE	220-240V AC / 50-60Hz	
MAXIMUM POWER CONSUMPTION	2.7 W / 3 VA	3 W / 3.5 VA
BATTERY (Ni-Cd)	3.6V/0.6Ah	3.6V/1Ah
INDICATIONS - CONTROLS	Charge LEDs, TEST Button	
CHARGE TIME	24 hours	
MINIMUM DURATION	1.5 hour	3 hours
LIGHT SOURCE	12 white LEDs	
ILLUMINATION (MAINS/EMERGENCY)	40lm / 100lm	38lm / 100lm
DEGREES OF COVER PROTECTION	IP42	
PRODUCED IN ACCORDANCE WITH	EN 60598-1, EN 60598-2-22, EN 55015, EN 61547, EN 61000-3-2, EN 61000-3-3	
VIEWING DISTANCE (as safety sign)	15m	
OPERATION TEMPERATURE RANGE	5 to 40 °C	
RELATIVE HUMIDITY	Up to 95%	
CONSTRUCTION MATERIAL	ABS/PC, PC	
EXTERNAL DIMENSION (L x W x H)	240 x 90 x 44 mm	
WEIGHT	345gr.	350gr.
GUARANTEE	3 years (1 year for the battery)	

Warranty

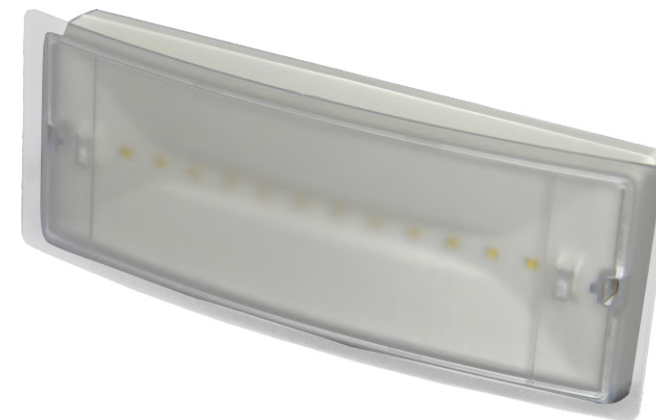
Olympia Electronics guarantees the quality, condition and operation of the goods. The period of warranty is specified in the official catalogue of Olympia Electronics and also in the technical leaflet, which accompanies each product. This warranty ceases to exist, if the buyer does not follow the technical instructions included in official documents given by Olympia Electronics, or if the buyer modifies the goods provided or has any repairs or re-setting done by a third party, unless Olympia Electronics has fully agreed to them in writing. Products that have been damaged can be returned to the premises of our company for repair or replacement, as long as the warranty period is valid.

Olympia Electronics reserves the right to repair or to replace the returned goods and to or not charge the buyer depending on the reason of deflection. Olympia Electronics reserves the right to charge or not the buyer the transportation cost.



72nd km. O.N.R. Thessaloniki-Katerini
P.C. 60300 P.O. Box 06 Eginio Pierias Greece

www.olympia-electronics.com
info@olympia-electronics.gr



GR-8/leds, GR-9/leds

NON-MAINTAINED / MAINTAINED EMERGENCY LUMINAIRES



Thank you for your trust in our products
Olympia Electronics - European manufacturer

Package Contents

1	Luminaire
1	Mounting accessories
1	Manual
1	Set of Pictograms

General

These luminaires are used indoors (ta 40°C) on the wall, where emergency light is needed. Each luminaire must be permanently connected to the mains power supply, according to Figure 5 (Page 3). In normal operation the illumination LEDs are lit as well as the green indicating charge LEDs, when the battery is charging. In case of a mains power supply failure, the luminaire goes into emergency mode and the led stripe is powered by the battery. When the mains power supply is restored the device turns to normal operation.

Non-Maintained / Maintained operation there is an option to select the non maintained or maintained operation by placing the jumper to the appropriate place according to the Figure 4 (see page 2).

ATTENTION!!!

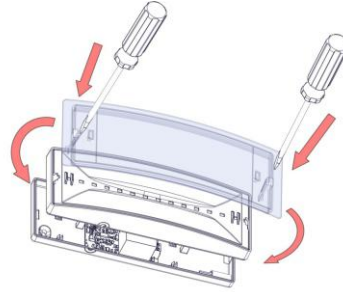
- Operations for installation, maintenance or testing must be done by authorized personnel only.
- The device must be connected to the mains power supply through a fuse dependent by the total amount of the line's power load.
- It is suggested to check every month the indication LED for battery charging, and by pushing the TEST button to check the emergency circuit. The led stripe should light as long as the TEST button is being pressed. If the luminaire doesn't work as described above, contact the installer.
- It is suggested to check every 6 months the minimum autonomous duration by disconnecting the mains power supply. Count the time that the led strip lights and in case of less time than the nominal autonomy, the battery must be replaced. If the measured time is considerably less than the nominal autonomy contact the installer. In case of battery or led stripe replacement, these must be replaced by parts of the same type, by the manufacturer or by a competent person.
- In case of inactive use for a period greater than 2 months, the battery must be disconnected fully charged, disconnect the battery by pulling out the battery's connector. This inactive condition should not exceed 4-5 months.
- It is not allowed to discard batteries into common trash bins, they must be discarded only in battery recycling points. Do not incinerate.**



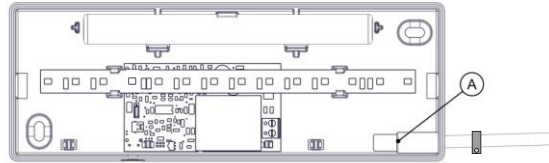
The light source contained in this luminaire shall only be replaced by the manufacturer, his agent or a similar qualified person.

NOTE! The light source is non-user replaceable.

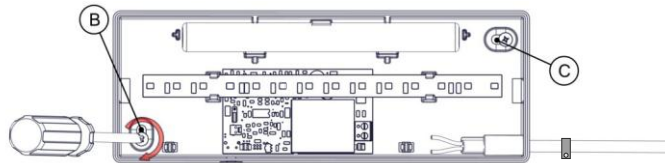
Installation instructions



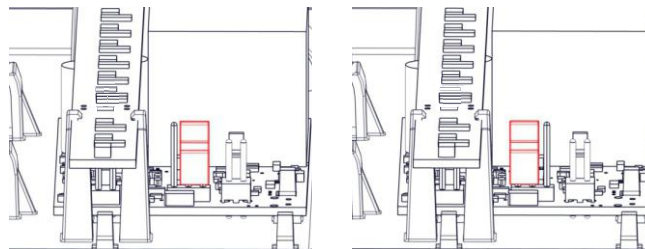
- Dismantle the device carefully by using a flat bladed screwdriver.



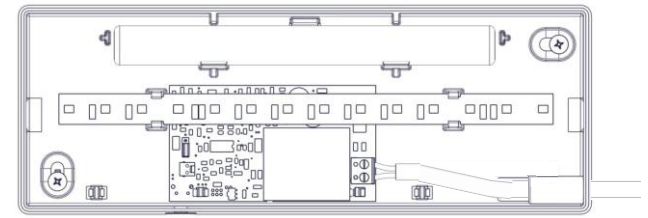
- Pass the mains cables through the hole (point A) and secure it with a suitable bracket (not included) to ensure immobilization of the cable at a distance of no more than 5cm from the luminaire's cable entry. **ATTENTION!!** To maintain the IP rating, the outer diameter of the power cable must be at least 8.2 mm².



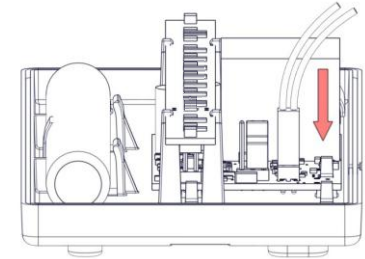
- Mount the plastic base on the wall (the test button must be facing downwards) using the included mounting accessories in points B and C.



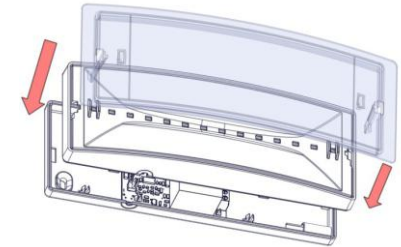
-



- Connect the mains cables to the terminal block.



- Connect the battery's cable with the appropriate terminal.



- Refit carefully the removed plastic parts and power on the device.

NOTE!!

After finishing the installation you must power the luminaire for at least 24 hours in order to completely charge the battery. The rated autonomy duration can be achieved after that time.

Accessory for Suspended Ceiling



The luminaire can be installed in a suspended ceiling, after the request of the necessary accessories.

A-3008 (927300800) Base for recessed mounting on suspended ceiling (A-3018 Suspended ceiling mounting springs are included).