



3 I/O PLUS



ADDRESSABLE TRIPLE INPUT/OUTPUT MODULE

MADE IN PORTUGAL - EU

GLOBAL FIRE EQUIPMENT S.A.

Sítio dos Barrabés, Armazém Nave Y, Caixa Postal 908-Z, 8150-016 São Brás de Alportel - PORTUGAL | Tel: +351 289 896 560
 Email: info@globalfire-equipment.com | Technical Support: techs@globalfire-equipment.com | www.globalfire-equipment.com

TECHNICAL SPECIFICATIONS

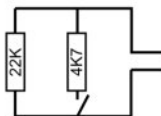
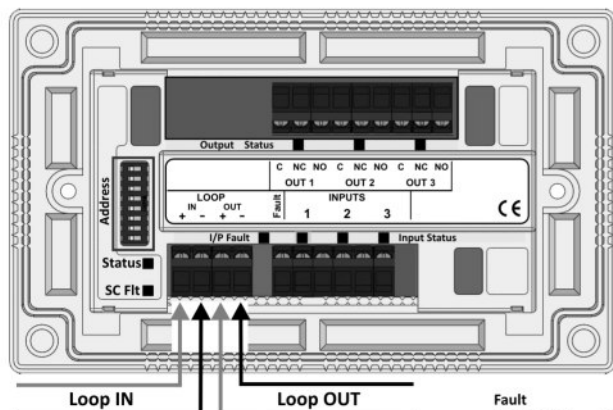
SUPPLY VOLTAGE	Loop Powered 20V to 30V DC
LOOP CURRENT - QUIESCENT (I_0)	1.4 mA (1 ch.) - 1.5 mA (2 ch.) - 1.6 mA (3 ch.)
LOOP CURRENT - ALARM / SHORT-CIRCUIT	$I_0 + 1.2$ mA for each I/P in alarm / $I_0 + 1.4$ mA max.
LOOP CURRENT - OPEN CIRCUIT	$I_0 + 1.0$ mA max.
LOOP CURRENT - OUTPUT ACTIVE	$I_0 + 1.1$ mA for each O/P activated
OUTPUT RELAY CONTACT RATING	2A 30V DC / 0.5A 125V AC
CABLE SIZE	0.5-2.5 mm ²
COLOUR / CASE MATERIAL	White & Transparent / ABS
OPER. TEMPERATURE / MAX. HUMIDITY	-10°C to 50°C / 95% RH Non-Condensing
DIMENSIONS / WEIGHT	150 (W) x 90 (L) x 32 (H) mm / 216 g inc. packaging

For EN54-13 compliance, please check the control panel manual specifications.

ORDER CODE	DESCRIPTION	CERTIFICATE
3 I/O PLUS - 1 CHANNEL	ADDRESSABLE SINGLE I/O MODULE - W/ ISOLATOR - W/ DUAL GANG BOX	1328-CPR-0542
3 I/O PLUS - 2 CHANNEL	ADDRESSABLE DOUBLE I/O MODULE - W/ ISOLATOR - W/ DUAL GANG BOX	1328-CPR-0543
3 I/O PLUS - 3 CHANNEL	ADDRESSABLE TRIPLE I/O MODULE - W/ ISOLATOR - W/ DUAL GANG BOX	1328-CPR-0544

CONNECTIONS

Device is polarized



INPUT

Monitored for Open and Short-Circuit - Can be driven by Conventional Panel's Zone Repeater Outputs. Each I/P should be fitted with 22 K Ohm end-of-line resistor.

Fire Condition set with 4.7 K Ohms resistor in parallel with e.o.l. resistor.

OUTPUT

The relay output provided is a latching relay. In order to reset it apply reset to the panel or alternatively remove power to the panel and re-apply. After a few seconds the relay will revert to its default position.

Input Resistance values

END OF LINE MONITORING RESISTOR 22K

ALARM RESISTOR (4K7) IN SERIES WITH NORMALLY OPEN CONTACT

Fault

Short circuit - < 2K2

Open Circuit - > 47K

Normal - 8K2 to 47K

Fire - 2K2 to 8K2

REPORTING DETAILS

In order to indicate the status of the module's working condition, the following LEDs are provided:

Status: This LED will flash Green, every time the address associated with the module is polled by the addressable panel.

Input Status: An I/P status Red LED is provided for the input. This Red LED will be illuminated continuously whenever there is a FIRE condition present at the input terminals. The analogue value reported by the module in this state is 64.

Output Status: An O/P status Red LED is provided for the output. This Red LED will be illuminated continuously whenever the output relay is activated.

Fault: This Yellow LED will be activated whenever there is either an open or short circuit fault on that particular input. If there is an open or short circuit condition, the analogue value reported to the addressable panel is 4.

SC Fault: This Yellow LED will be ON when there is a short circuit in the loop.

D.I.L. SWITCHES CONFIGURATION



Address Switches binary weights
 1 ON =1 4 ON =8 7 ON =64
 2 ON =2 5 ON =16
 3 ON =4 6 ON =32

Switches 1-7

Used to configure the module's address.

Switch 8

Programming mode.

For more information please refer to the IO-ISO / 3-IO-PLUS / MAINS IO programming manual available on our website.

Each 2 Channel module occupies 2 consecutive addresses.
 Each 3 Channel module occupies 3 consecutive addresses.

ADDRESS SETTINGS

01	02	03	04	05	06	07	08
09	10	11	12	13	14	15	16
17	18	19	20	21	22	23	24
25	26	27	28	29	30	31	32
33	34	35	36	37	38	39	40
41	42	43	44	45	46	47	48
49	50	51	52	53	54	55	56
57	58	59	60	61	62	63	64
65	66	67	68	69	70	71	72
73	74	75	76	77	78	79	80
81	82	83	84	85	86	87	88
89	90	91	92	93	94	95	96
97	98	99	100	101	102	103	104
105	106	107	108	109	110	111	112
113	114	115	116	117	118	119	120
121	122	123	124	125			