

PARADOX 

# PMD5M

Indoor Miniature Motion Detector



INSTALLATION MANUAL

Version 1.0

## Introduction

The Paradox PMD5M is a miniature indoor, single-optic wireless Passive Infrared (PIR) motion detector with a super creep down-looking detection beam. It communicates with the Paradox M systems using 2-way wireless communication and incorporates the latest Gaussian Frequency Shift Keying (GFSK) technology with frequency and encryption hopping. These features ensure superior wireless range, enhanced encryption for security, reliable communication, and extended battery life.

## Quick Installation - Experienced Installers

To install PMD5M:

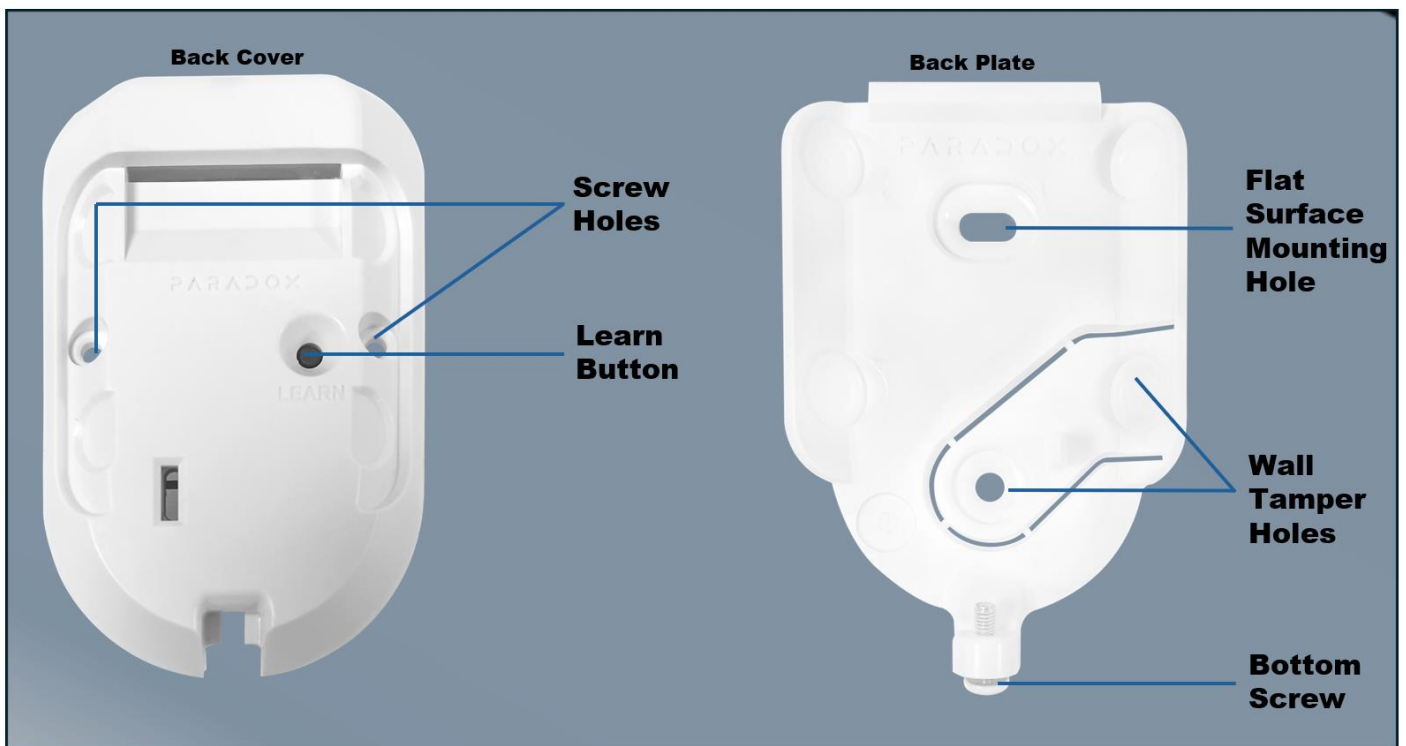
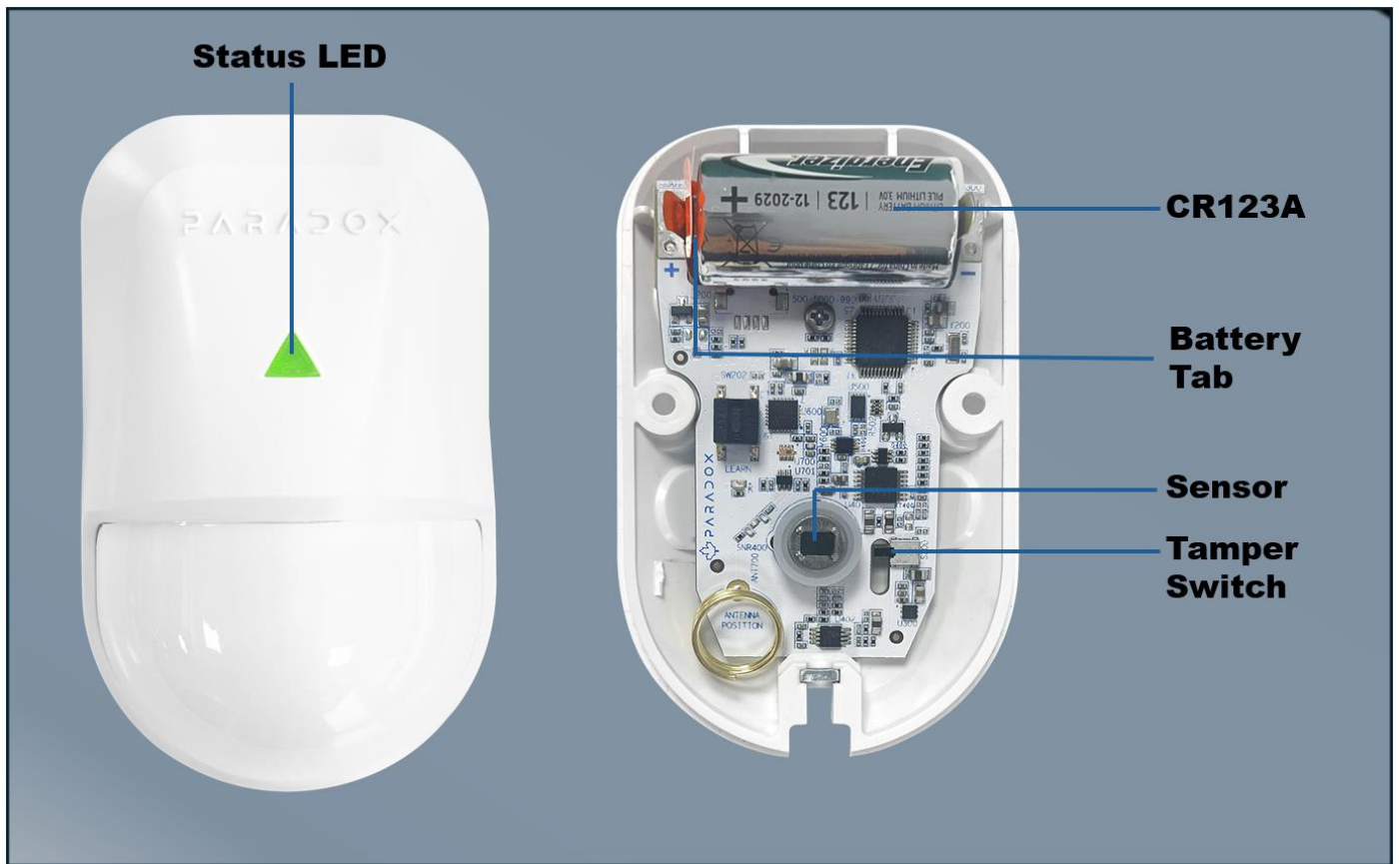
1. Loosen the screw at the bottom of the detector and remove the backplate.
2. Secure the backplate to the wall using the mounting holes.
3. Remove the orange tab to activate the device.
4. Secure the device onto the backplate.
5. Perform a walk test.
6. Pair PMD5M with the console (Using the BlueEye application):
  - Go to: **Hardware** > Tap **+** on the top-right of the page > **Auto learn devices**.**NOTE:** *You can instantly pair PMD5M by pressing the **Learn** button, or by opening the tamper or a zone.*
7. Configure PMD5M (Using the BlueEye application):
  - Go to: **Hardware** > Tap PMD5M from the device list > Enter the necessary details > **Save**.

Built-in status indications of PMD5M:

- Red Blinking 3 times - Not connected to the console; the device is defaulted (new or unpaired).
- Red (3 seconds) - Not connected to the console; but the device is paired.
- Green (3 seconds) - Detection and transmission occurred (maximum twice within 3 minutes)
- Green Blinking - Two detections within 3 minutes and goes to **cool-down** mode.
- Red/Green - After the tamper is detected, the device blinks red and green alternately for 3 seconds. After the tamper is resolved and the device is closed, the device blinks green for 3 seconds.
- Green Blinking (8 seconds) – PIR stabilization is in progress (after power-up).

## Components of PMD5M

The following figures display the components of PMD5M.

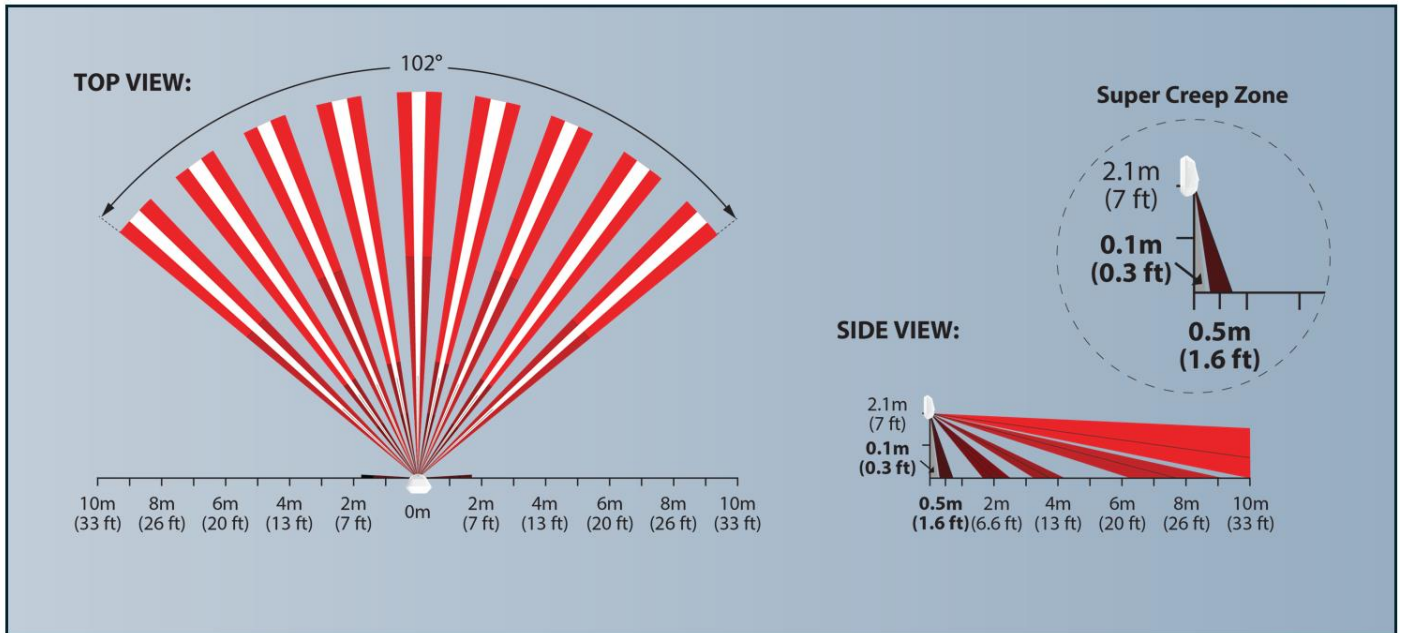


Components of PMD5M

## Detection Field

The detector must be installed at a height of 2.1 meters (6.9 feet) above the floor level.

**NOTE:** *Mounting the detector at a lower height may reduce its detection range while mounting it higher could reduce the performance of the lower detection beams.*



## Physical Mounting

### CAUTION:

- Ensure that there are no obstacles, such as curtains, furniture, or doors that may block its detection field.
- Avoid placing the detector near heat sources, air conditioners, or in direct sunlight to minimize false alarms.

To mount the PMD5M motion detector:

1. Release the screw from the bottom of the detector and remove the backplate.
2. Fix the backplate on the wall securing the mounting holes.

**NOTE:** *As per the EN security standards, one screw must be secured in the tamper hole. The use of double-sided tape does not trigger a wall tamper alarm.*

3. Pull out the orange isolation tab from the device.  
The PMD5M is powered on.
4. Secure the device on the backplate and tighten the screw at the bottom.

After the PMD5M detector is powered on, it enters a walk-test mode for 15 minutes. For more information, see the [Walk Test](#) section in this manual.

## Power-up Sequence

During the power-up sequence, the LED will flash five times red if the device is not paired to the console or five times green if paired to the console. The PMD5M waits between 0-10 seconds before connecting/pairing with the console. If the cover of the device is open, green and red LEDs will flash quickly.

## Pairing PMD5M with the Wireless M Console

The pairing and configuration settings of PMD5M are managed through the BlueEye application.

## Prerequisites

Ensure that:

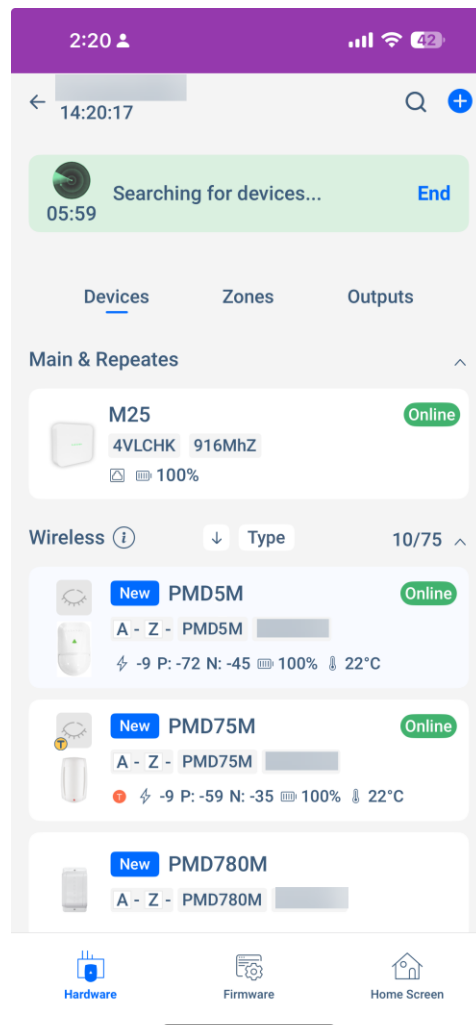
1. The PMD5M is within the range of the console.
2. The BlueEye application is installed on your mobile and connected to the site.
3. The M console is powered on (Paradox logo color - white, red, or green).

## Pairing PMD5M

To pair the PMD5M with the wireless console by an installer:

1. In BlueEye, when in the **Hardware** tab, tap **+** on the top-right of the page, and then tap **Auto learn wireless devices**.

The wireless console searches for new devices and a rotating radar icon is displayed. All unpaired devices pair within 6 minutes and appear at the top of the device list with a **new** tag and voice announcements. You can remove the detector's backplate and press the Learn button momentarily, or you can trigger the tamper or open a zone for immediate pairing.



To identify the device, you can either open or close the zone, or trigger the tamper, and then check the device's screen in the BlueEye application to see the corresponding display.

When you open or close the zone, an eye icon displayed beside the device name shows opening and closing. When you trigger the tamper, a **T** symbol appears on the device name in the BlueEye application.

## Pairing Previously Used Devices

You can pair used devices under the following conditions:

- **When the previously used device is not online with another wireless console:** Start auto-learn. Open the device or press the **Learn** button momentarily for immediate pairing, or wait up to 6 minutes for automatic pairing.
- **When the previously used device is online with another wireless console:** Press and hold the **Learn** button for 8 seconds to reset the device to its default settings. Reset is indicated by the LED flashing red three times. Once the reset is complete, initiate auto-learn.  
**NOTE:** *Ensure the device is not connected or paired with the previous console before resetting the device.*

## Configuring the PMD5M

To configure the PMD5M settings:

1. When in the **Hardware**, tap the **PMD5M** device.
2. On the page that opens, enter the necessary details for the parameters and then tap **Save**.  
For details about each parameter displayed on the page, see [Table 1](#).

12:30 PMD5M 17:58:39 S/N 229D445

Online Tamper

Zone Label  
Lobby

Device Location  
Enter Location

10 P: -25 N: -75 26°C 75%

LED ☒

Sensitivity Low

Detection Energy Slow

Zone Programming

Zone# 1 > Area 1: Kitchen home >

Zone Type Instant

Zone Activity Arm

Follow Delay Zone ☐

HW Version 2.0

FW Version 3.0.2  
[Check for upgrade](#)

History Info >

Installation Guide >

☐ Suspend Device

☐ Suspend Tamper

☐ Reset to default

☐ Delete Device

Save

The following table lists the parameters displayed for configuring the PMD5M, along with their descriptions.

Table 1

Parameter		Description
<b>Label</b>		Enter a name for the zone.
<b>LED</b>		Determines whether the LED indications for the device are enabled or disabled.
<b>Sensitivity</b>		There are two sensitivity levels, High (default) and Low. <ul style="list-style-type: none"> <li>• High sensitivity mode detects smaller, subtle movements; useful for high-security areas or when precise detection is needed.</li> <li>• Low sensitivity mode requires larger movements to trigger detection. It is recommended in areas where the incidence of false alarms from vibrations may be greater.</li> </ul>
<b>Detection Energy</b>		Adjust the energy level required to trigger an alarm. <ul style="list-style-type: none"> <li>• <b>Slow</b> is the standard setting for normal detection.</li> <li>• <b>Fast (default)</b> – You can use this option if there is a risk of false alarms due to factors such as strong sunlight reflections, air conditioning drafts, or moving curtains.</li> </ul>
<b>Zone Programming</b>	<b>Zone# and Area</b>	Assign a zone and area number.
	<b>Zone Type and Zone Activity</b>	Select the type of zone – Instant, Delay, 24 hours when the device is active in the Arm, Stay, or Sleep modes. The following are the different zone types: <ul style="list-style-type: none"> <li>• <b>Instant</b> – When in any armed status, an immediate alarm occurs. However, a delay period can be added to the <b>Instant</b> zone when arming in the Stay and Sleep modes.</li> <li>• <b>Delay</b> – When a zone is opened, it triggers an entry delay in any arming mode.</li> <li>• <b>24 hours</b> – Always armed. The system remains in alarm as long as this zone is open. The system can be armed even if the 24-hour zone is in alarm.</li> </ul>
	<b>Follow Delay Zone</b>	This zone is instant and becomes a delay zone if a delay zone is opened first.
<b>About</b>		This tab displays details such as the installation date, production date, last programming date, battery replacements, battery history, and upgrade history.
<b>Suspend Device</b>		Disables monitoring of the device in the system.
<b>Suspend Tamper</b>		Disables tamper monitoring for the device.
<b>Reset to Default</b>		This will reset the device to the factory default settings. <b>NOTE:</b> <i>Only an installer can reset the device.</i>
<b>Delete Device</b>		This option deletes the device from the system completely. After deletion, the system generates a push notification only if the owner registration is complete, not during installation. <b>NOTE:</b> <i>Only an installer can delete the device.</i>

## LED Indications

After configuring PMD5M, the detector displays various LED indications based on specific events. The following table lists the LED indications and their corresponding event.

Table 2

LED Indication	Event
<b>Red Blinking 3 times</b>	Not connected to the console; the device is defaulted (new or unpaired).
<b>Red (3 seconds)</b>	Not connected to the console; but the device is paired.

<b>Green (3 seconds)</b>	Detection and transmission occurred (maximum twice within 3 minutes)
<b>Green Blinking</b>	Two detections within 3 minutes and goes to <b>Cool Down</b> mode.
<b>Red/Green</b>	After tamper is detected, the device blinks red and green alternately for 3 seconds. After the tamper is resolved and the device is closed, the device blinks green for 3 seconds.
<b>Green Blinking (8 seconds)</b>	PIR stabilization is in progress (after power-up).

## Resetting

Press and hold the **Learn** button for 8 seconds to reset the device to its default settings. Reset is indicated by LED flashing red three times.

## Upgrading Firmware

To upgrade the firmware:

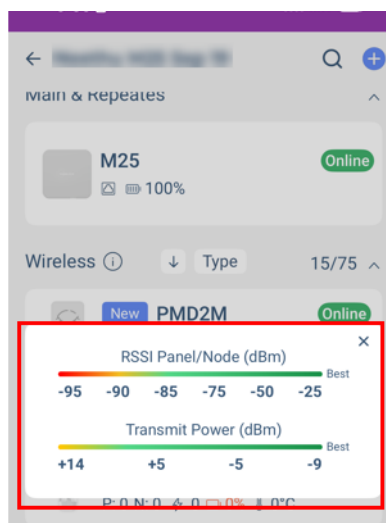
1. When in the **Hardware** tab, tap on the device from the list > **Check for Upgrade**.
2. If an upgrade is available, tap **Upgrade** when prompted.  
The process may take a few minutes. Keep track of the progress in the BlueEye application to ensure that the upgrade is completed successfully. Both the Installers and owners can perform the upgrade.

## Signal Strength and Transmit Power Monitoring

The BlueEye application provides insights into each device's received signal strength and transmission power to optimize performance.

To view the RSSI and transmit power range:




1. When in the **Hardware tab**, tap the ⓘ icon next to the **Wireless** tab.  
A pop-up window with the RSSI and transmit power range is displayed.
2. Maximum power transmitted by PMD5M:
  - 868 MHz: +14 dBm
  - 914 MHz: +22 dBm





Tap on any listed device to view signal strength and additional device metrics. The following parameters are displayed for each device:



- **P** - Received signal strength at the panel
- **N** - Received signal strength at the device
-  - Transmit power of the device
-  - Current temperature reading of the device
-  - Battery level of the device

A higher P and N value indicates stronger and clearer communication between the console and the device.

- If **P** is low, the console struggles to receive signals from the device.
- If **N** is low, the device struggles to receive signals from the console.

**NOTE:** *Values below -93 with maximum Tx power are not recommended values, and RPT5M can be used to extend the range.*

Power transmission impacts only **P**:

- When **power transmission** increases, the **P** value at the console generally improves, as a stronger signal is sent.
- If the **P** value is good, the device can reduce its transmission power to save battery life.

## Walk Test

After powering on the detector or opening/closing the cover (if already powered on), the detector enters a walk-test mode for 15 minutes. Perform the following walk test to ensure the motion detector detects movement in the intended area.

**Steps:**

1. Walk across the detection field, moving in and out of the detector's range.
2. Observe LED Indications.
3. Adjust its location and re-test if the motion detector doesn't pick up movement as expected.

With **Sensitivity** set to **High**, and **Detection Energy** set to **Fast**, then crossing two beams is detected as a movement. With the **Sensitivity** set to **Low**, the amount of movement required to generate detection is doubled. The detector exits the walk-test mode after 15 minutes. To reactivate it, open and then close the tamper.

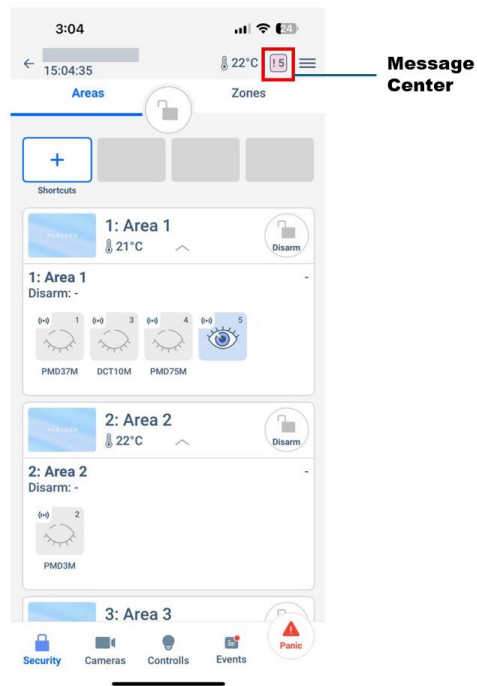
## Cool-Down Mode

The PMD5M motion detector indicates detection with a 3-second green LED display (or a 3-second red if the detector is not paired to the console). After two detections within 3 minutes, the PMD5M enters a **cool-down** mode to conserve battery life. During this period, it is indicated by a green blink (or red if not paired), but this signal will not be transmitted to the console.

## Wall Tamper Protection

The PMD5M motion detector is equipped with wall tamper protection. If the system is armed, any tamper activation immediately triggers a system alarm. When the system is disarmed, a tamper activation generates a report to the CMS, sends a push notification, and displays a tamper trouble alert in the BlueEye application.





## Replacing Battery

To replace the battery:

1. Loosen the bottom screw of the device and detach it from the backplate.
2. Remove the screws from the back cover and open the device.
3. Take out the battery from the holder and replace it with a new one, ensuring correct polarity.
4. Close the device and tighten the back cover screws.
5. Reattach the device to the backplate and tighten the bottom screw.

## Technical Specifications

The following table lists the technical specifications of PMD5M along with their descriptions.

**NOTE:** *The specifications are subject to change without prior notice.*

Table 3

Specification	Description
<b>Wireless Type</b>	GFSK two-way with frequency and encryption hopping
<b>Sensor Type</b>	Dual rectangular element
<b>Coverage</b>	110° - 12m (39 ft) x 12m (39 ft)
<b>Detection Speed</b>	0.2m/s to 3.5m/s (0.6 ft/s to 11.5 ft/s)
<b>RF Frequency</b>	868 (865.05 - 867.95) MHz or 914 (902.25 - 927.55) MHz Other countries might change
<b>RF power</b>	868 MHz up to +14 dBm radiated, 914 MHz up to +22 dBm in permitted countries.
<b>Transmission Time</b>	Less than 20 ms
<b>Supervision Time</b>	20 minutes, 10 minutes (Default), and 3 minutes
<b>Status Indicators</b>	Battery, temperature, TX/RX values
<b>Battery Lithium</b>	1 x 3 VDC CR123A, up to 5 years of battery life
<b>Installation Environment</b>	Indoor

<b>Firmware Upgrade</b>	Remotely over the air, via BlueEye
<b>Operating Temperature</b> (with lithium batteries)	-20°C to +40°C (-4°F to 104°F)
<b>Auto Learn</b>	Yes
<b>Colors</b>	White, Grey
<b>Dimensions</b>	5.6W x 9.2H x 1.8D cm (2.2W x 3.6H x 0.7D in.)
<b>Weight</b>	80 g
<b>Certification</b>	CE, EN 50131-2-2, EN 50131-6, EN 50131-5-3, FCC 15.247

## FCC Statements

This device complies with Part 15 of the FCC Rules. Operation is subject to the following two conditions:

1. This device may not cause harmful interference, and
2. This device must accept any interference received, including interference that may cause undesired operation.

Changes or modifications not expressly approved by the party responsible for compliance could void the user's authority to operate this equipment.

**NOTE:** This equipment has been tested and found to comply with the limits for a Class B digital device, pursuant to part 15 of the FCC Rules. These limits are designed to provide reasonable protection against harmful interference in a residential installation. This equipment generates, uses, and can radiate radio frequency energy and, if not installed and used in accordance with the instructions, may cause harmful interference to radio communications. However, there is no guarantee that interference will not occur in a particular installation.

If this equipment does cause harmful interference to radio or television reception, which can be determined by turning the equipment off and on, the user is encouraged to try to correct the interference by one or more of the following measures:

1. Reorient or relocate the receiving antenna.
2. Increase the separation between the equipment and the receiver.
3. Connect the equipment into an outlet on a circuit different from that to which the receiver is connected.
4. Consult the dealer or an experienced radio/TV technician for help.

**WARNING – RF EXPOSURE COMPLIANCE:** This equipment should be installed and operated with a minimum distance 20cm between the radiator and your body.

**FCC ID:** KDYPMD5M

**IC:** 2438A-PMD5M

- This Class B digital apparatus complies with Canadian ICES-003.

## IC Statements

This device contains licence-exempt transmitter(s)/receiver(s) that comply with Innovation, Science and Economic Development Canada's licence-exempt RSS(s). Operation is subject to the following two conditions:

1. This device may not cause interference.
2. This device must accept any interference, including interference that may cause undesired operation of the device.

## Warranty

For complete warranty information on this product, see the [Limited Warranty Statement](#) document, or contact your local Paradox distributor.

## Patents

US, Canadian, and international patents may apply. Paradox is a trademark or registered trademark of Paradox Security Systems (Bahamas) Ltd.

© 2025 Paradox Security Systems (Bahamas) Ltd. All rights reserved.